

UNIT 1

UNIT 2

NOTE: ANY & ALL Material shipped loose for the site completion of the manufactured product is ULTIMATELY the SOLE RESPONSIBILITY OF THE BUILDER LISTED BELOW to install and finish.

Standard
Princeton 2/2

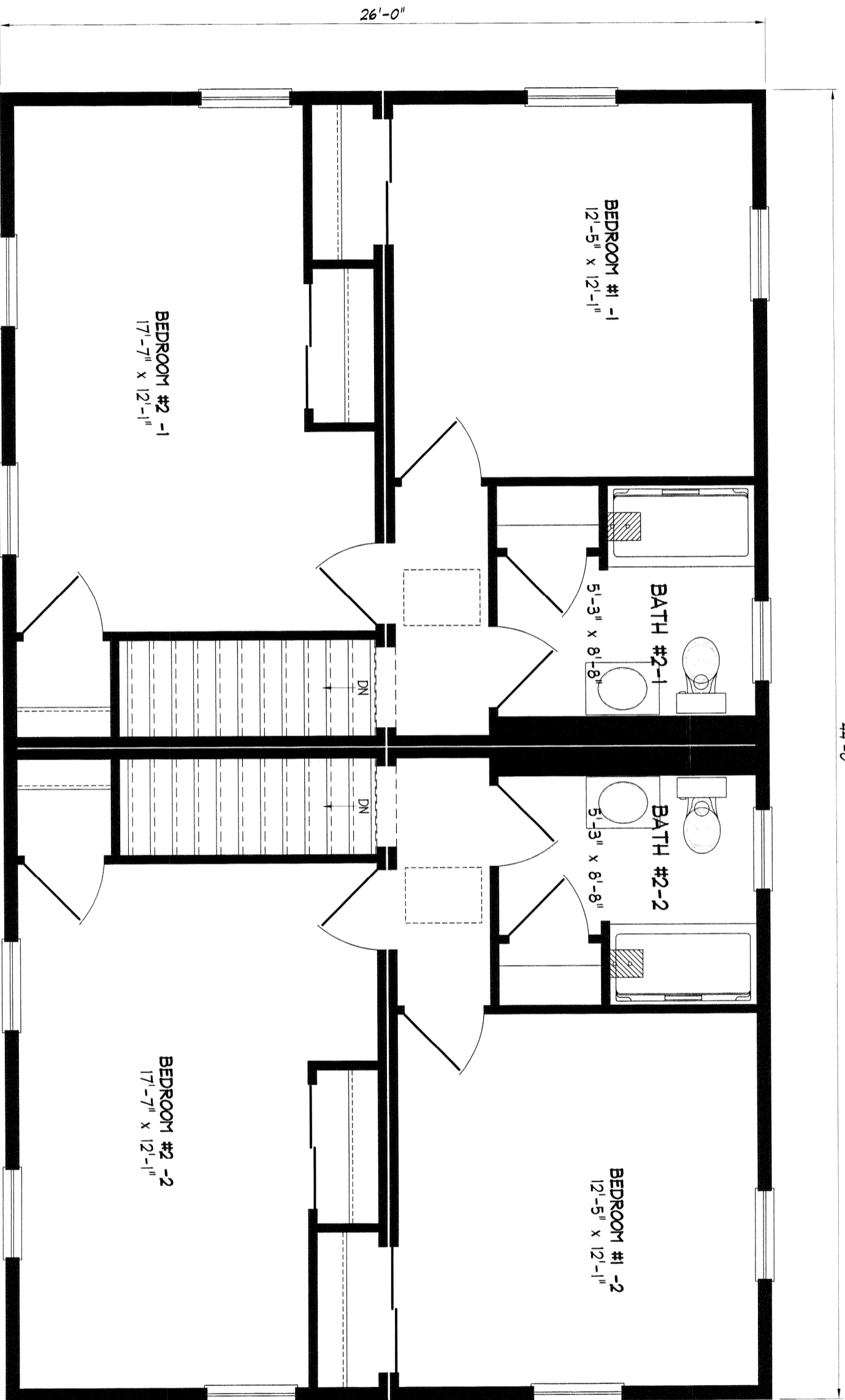


NEW ENGLAND HOMES INC.
270 OCEAN ROAD
GREENLAND, NH 03840
© COPYRIGHT 2000

DRAWN	DATE
REV.	DATE
SCALE	1/4" = 1'-0"

NEH
NEH

44'-0"



UNIT 1

UNIT 2

NOTE: ANY & ALL Material shipped loose for the site completion of the manufactured product is ULTIMATELY the SOLE RESPONSIBILITY OF THE BUILDER LISTED BELOW to install and finish.

Standard
Princeton 2/2



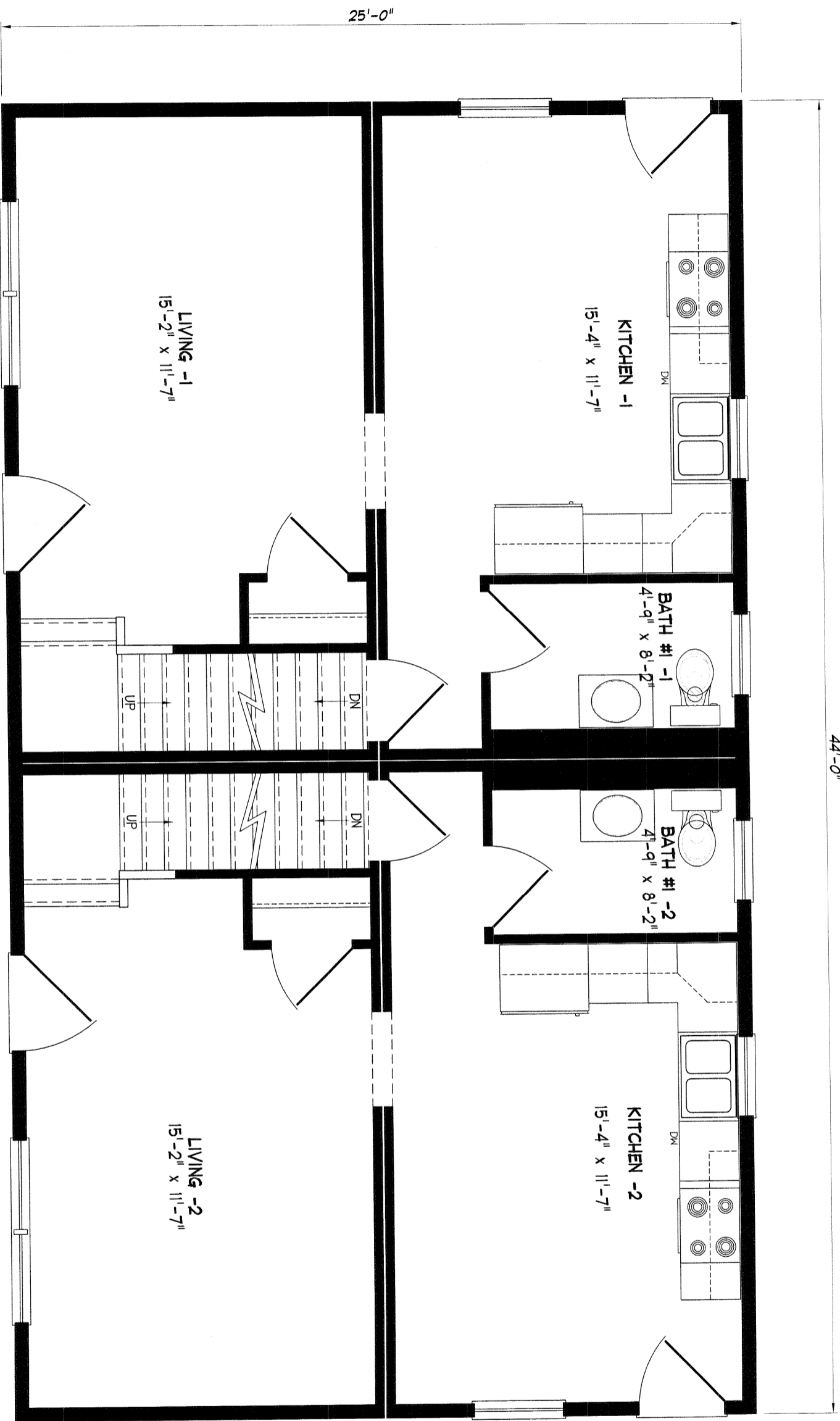
NEW ENGLAND HOMES INC.

270 OCEAN ROAD
GREENLAND, NH 03840
© COPYRIGHT 2000

DRAWN	DATE
REV.	DATE
SCALE	1/4" = 1'-0"

NEH
NEH

44'-0"



25'-0"

LIVING -1
15'-2" x 11'-7"

KITCHEN -1
15'-4" x 11'-7"

BATH #1 -1
4'-9" x 8'-2"

BATH #1 -2
4'-9" x 8'-2"

LIVING -2
15'-2" x 11'-7"

KITCHEN -2
15'-4" x 11'-7"

NOTE: ANY & ALL Material shipped loose for the site completion of the manufactured product is ULTIMATELY the SOLE RESPONSIBILITY OF THE BUILDER LISTED BELOW to install and finish.

Standard

Princeton 2/3



NEW ENGLAND HOMES INC.

270 OCEAN ROAD
GREENLAND, NH 03840
© COPYRIGHT 2000

DRAWN DATE

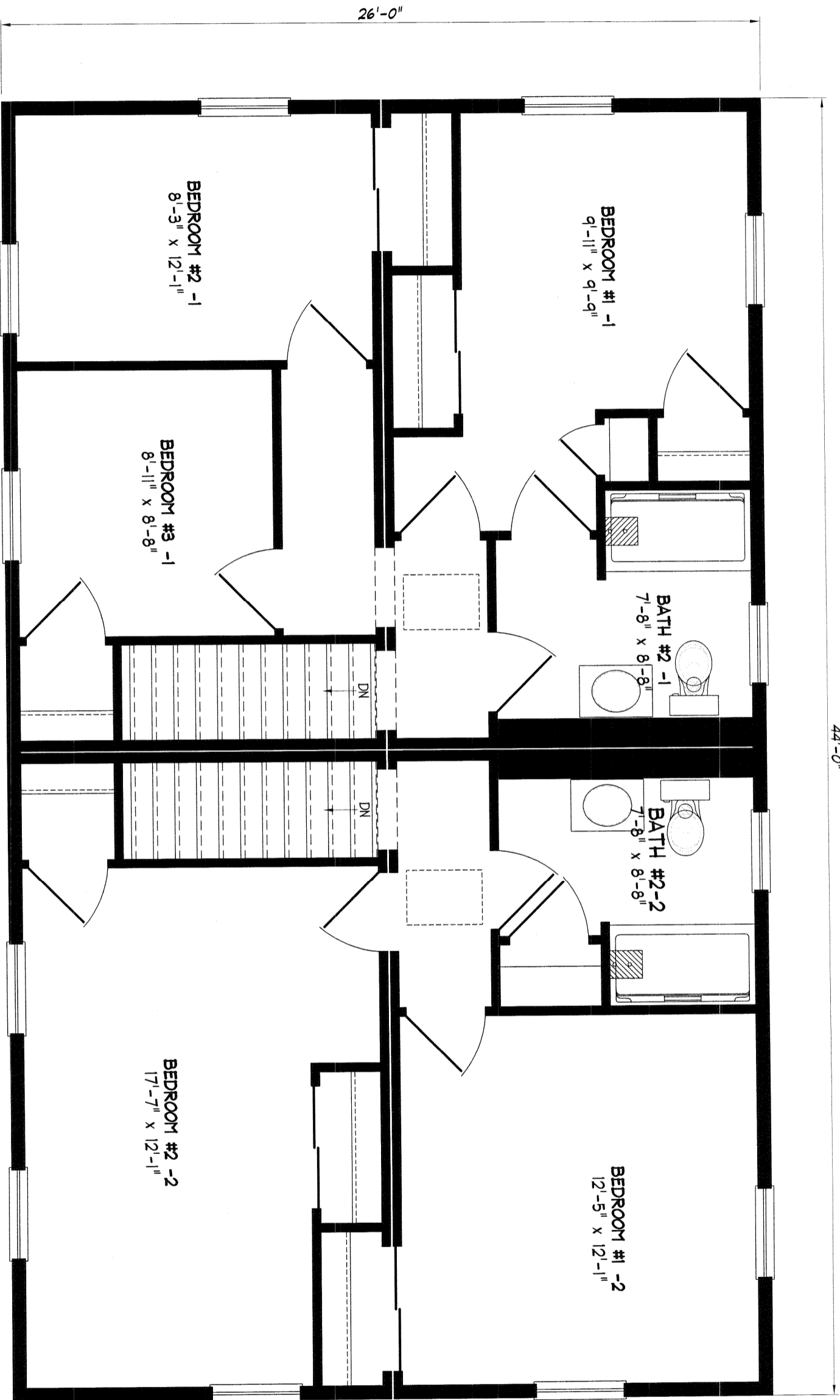
REV DATE

SCALE 1/4" = 1'-0"

NEH

NEH

44'-0"



26'-0"

NOTE: ANY & ALL Material shipped loose for the site completion of the manufactured product is ULTIMATELY the SOLE RESPONSIBILITY OF THE BUILDER LISTED BELOW to install and finish.

Standard
Princeton 2/3



NEW ENGLAND HOMES INC.

270 OCEAN ROAD
GREENLAND, NH 03840
© COPYRIGHT 2000

REV.	DATE	DATE
SCALE	1/4" = 1'-0"	

NEH
NEH