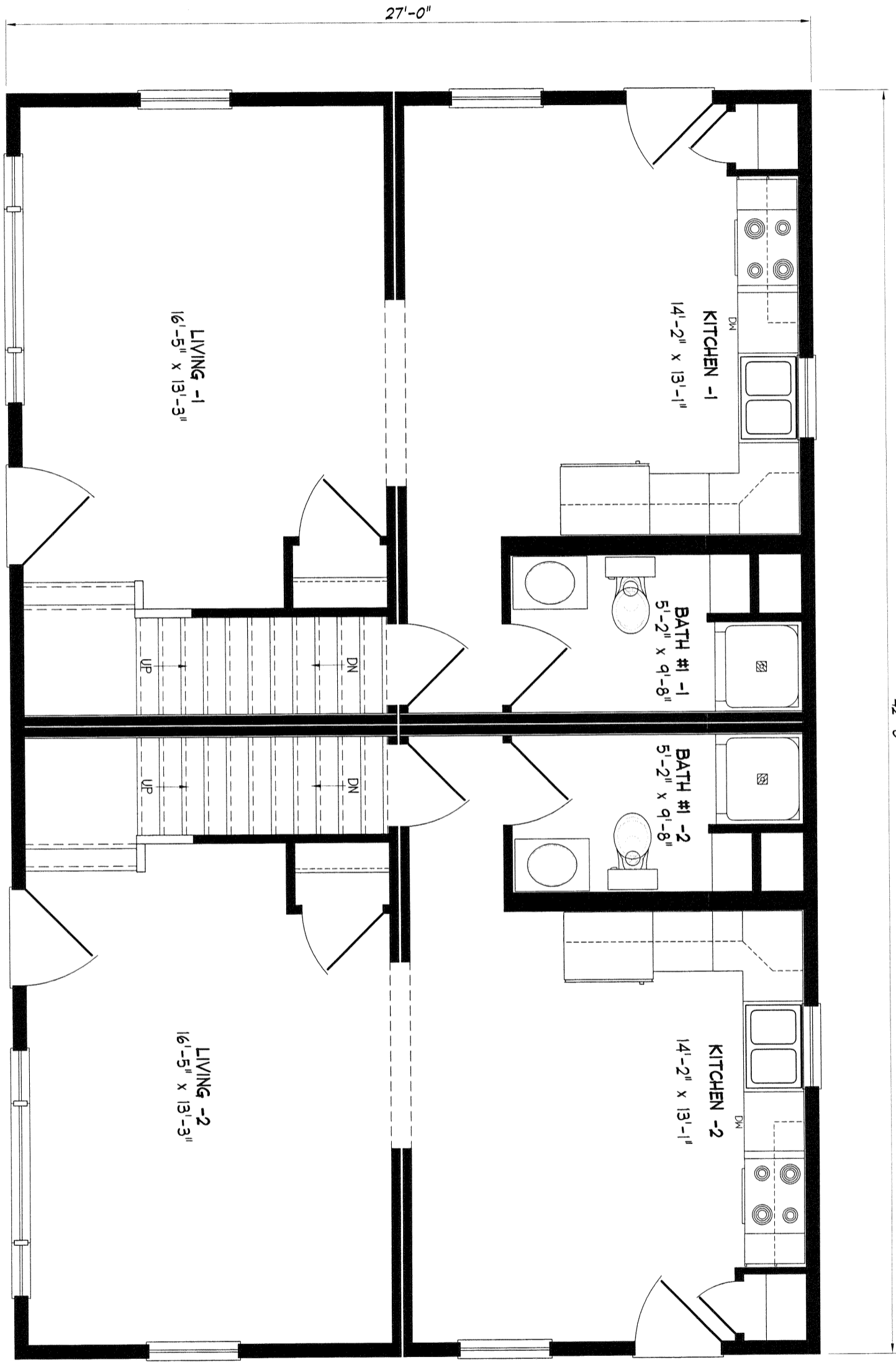


42'-0"



- added 1 3049 to living to meet light vent
 -added 1 2-6 co to top of stairs

UNIT #1

UNIT #2

NOTE: ANY & ALL Material shipped loose for the site completion of the manufactured product is ULTIMATELY the SOLE RESPONSIBILITY OF THE BUILDER LISTED BELOW to install and finish.

Standard
Libertyhill

New England
Homes

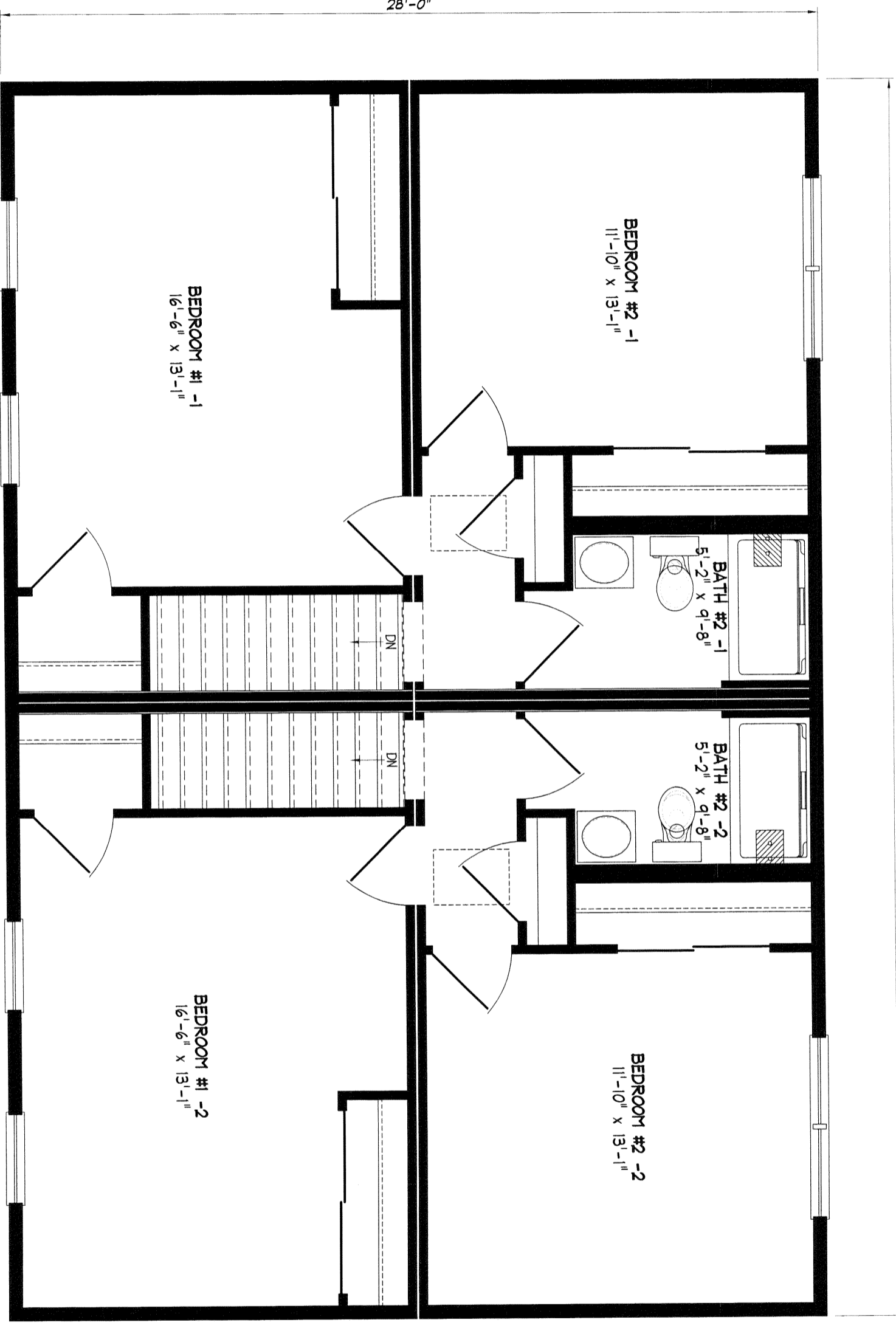
NEW ENGLAND HOMES INC.
270 OCEAN ROAD
GREENLAND, NH 03840
© COPYRIGHT 2000

DRAWN	DATE
REV	DATE
SCALE	1/4" = 1'-0"

NEH
NEH

42'-0"

28'-0"



BEDROOM #2 -1
11'-10" x 13'-1"

BEDROOM #1 -1
16'-6" x 13'-1"

BATH #2 -1
5'-2" x 9'-8"

BATH #2 -2
5'-2" x 9'-8"

BEDROOM #2 -2
11'-10" x 13'-1"

BEDROOM #1 -2
16'-6" x 13'-1"

- added 1 3049 to living to meet light vent
 - added 1 2-6 co to top of stairs

UNIT #1

UNIT #2

NOTE: ANY & ALL Material shipped loose for the site completion of the manufactured product is ULTIMATELY the SOLE RESPONSIBILITY OF THE BUILDER LISTED BELOW to install and finish.

Standard
Libertyhill



NEW ENGLAND HOMES INC.

270 OCEAN ROAD
GREENLAND, NH 03840
© COPYRIGHT 2000

DRAWN	DATE
REV.	DATE
SCALE 1/4" = 1'-0"	

NEH
NEH