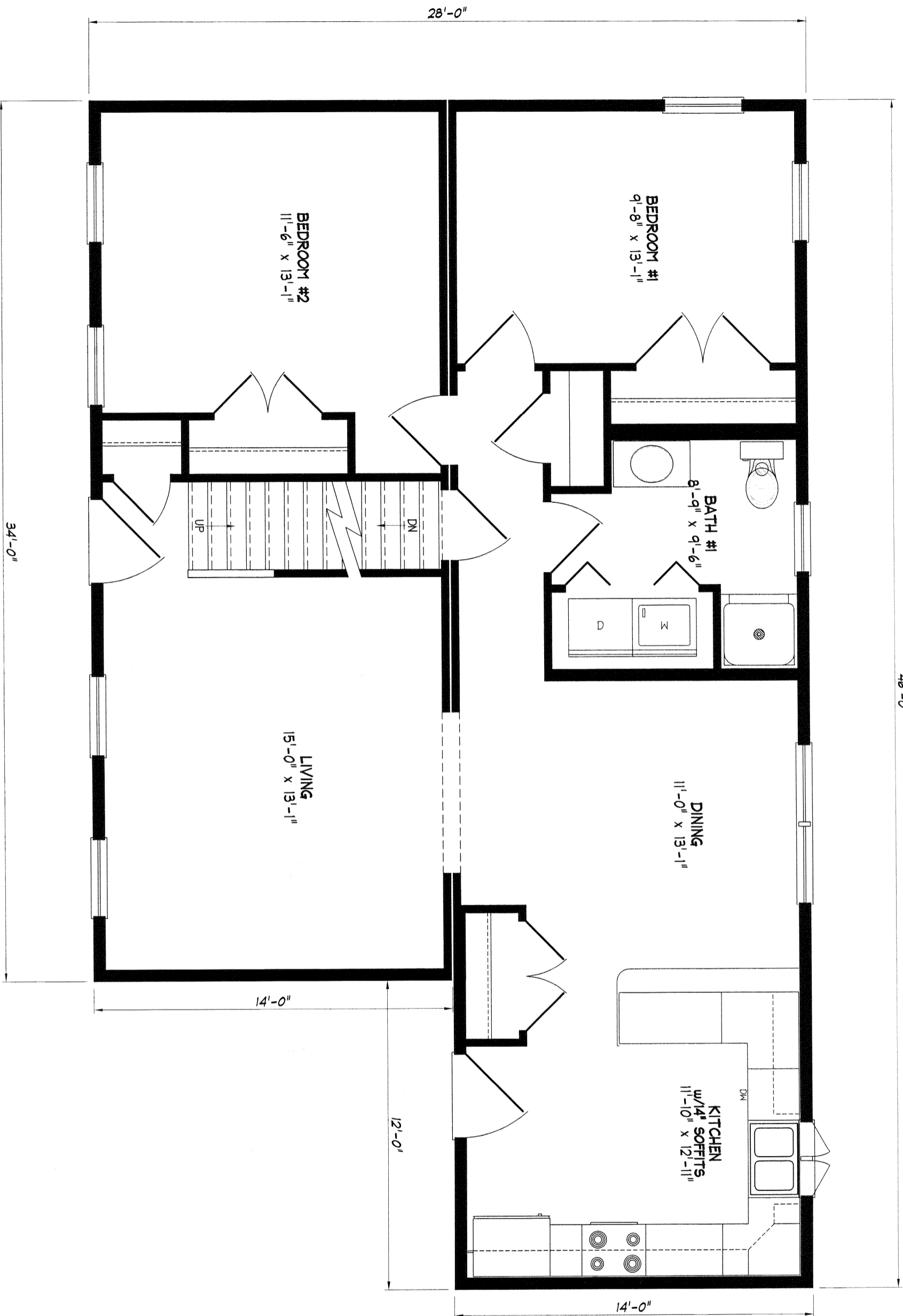


46'-0"



NOTES:
 -BD4-18 AND M1830 NEXT TO FRIDGE WERE CHANGED TO BD4-15 AND M1530 FOR FIT (2x6 FRONT AND REAR EXTERIOR WALLS)
 -ADDED 244DH 3049 IN BEDROOM #4 TO MEET LIGHT/VENT REQUIREMENTS
 -36" SHOWER IN BATH #1 DUE TO SPACE RESTRICTIONS
 -BATH #2 HAS (3) 244DH 2830 (TWO OF WHICH ARE TEMPERED)

NOTE: ANY & ALL Material shipped loose for the site completion of the manufactured product is ULTIMATELY the SOLE RESPONSIBILITY OF THE BUILDER LISTED BELOW to install and finish.

Standard
Rockport

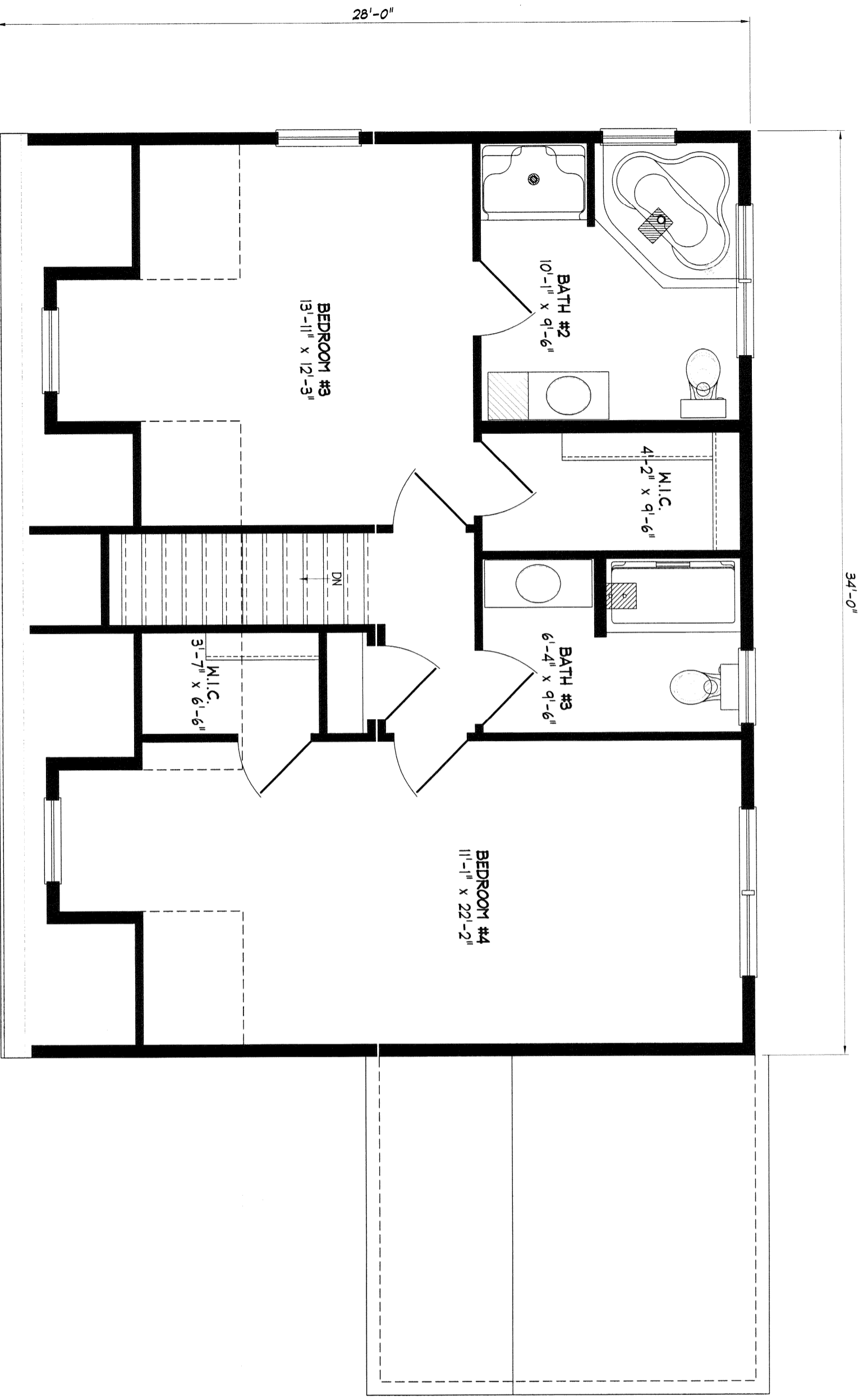


NEW ENGLAND HOMES INC.

2710 OCEAN ROAD
GREENLAND, N.H. 03840
© COPYRIGHT 2000

DRAWN	PRG	DATE	03-16-06
REV		DATE	
SCALE		1/4" = 1'-0"	

NE.H.
Standard



NOTES:
 -BD4-18 AND W1830 NEXT TO FRIDGE WERE CHANGED TO BD4-15 AND W1530 FOR FIT (2x6 FRONT AND REAR EXTERIOR WALLS)
 -ADDED 244DH 304R IN BEDROOM #4 TO MEET LIGHT/VENT REQUIREMENTS
 -36" SHOWER IN BATH #1 DUE TO SPACE RESTRICTIONS
 -BATH #2 HAS (3)244DH 2830 (TWO OF WHICH ARE TEMPERED)

Standard
 Rockport



NEW ENGLAND HOMES INC.
 270 OCEAN ROAD
 GREENLAND, NH 03940
 © COPYRIGHT 2000

DRAWN	PRG	DATE	03-16-06
REV		DATE	
SCALE	1/4" = 1'-0"		

NE.H.
 Standard

NOTE: ANY & ALL Material shipped loose for the site completion of the manufactured product is ULTIMATELY the SOLE RESPONSIBILITY OF THE BUILDER LISTED BELOW to install and finish.