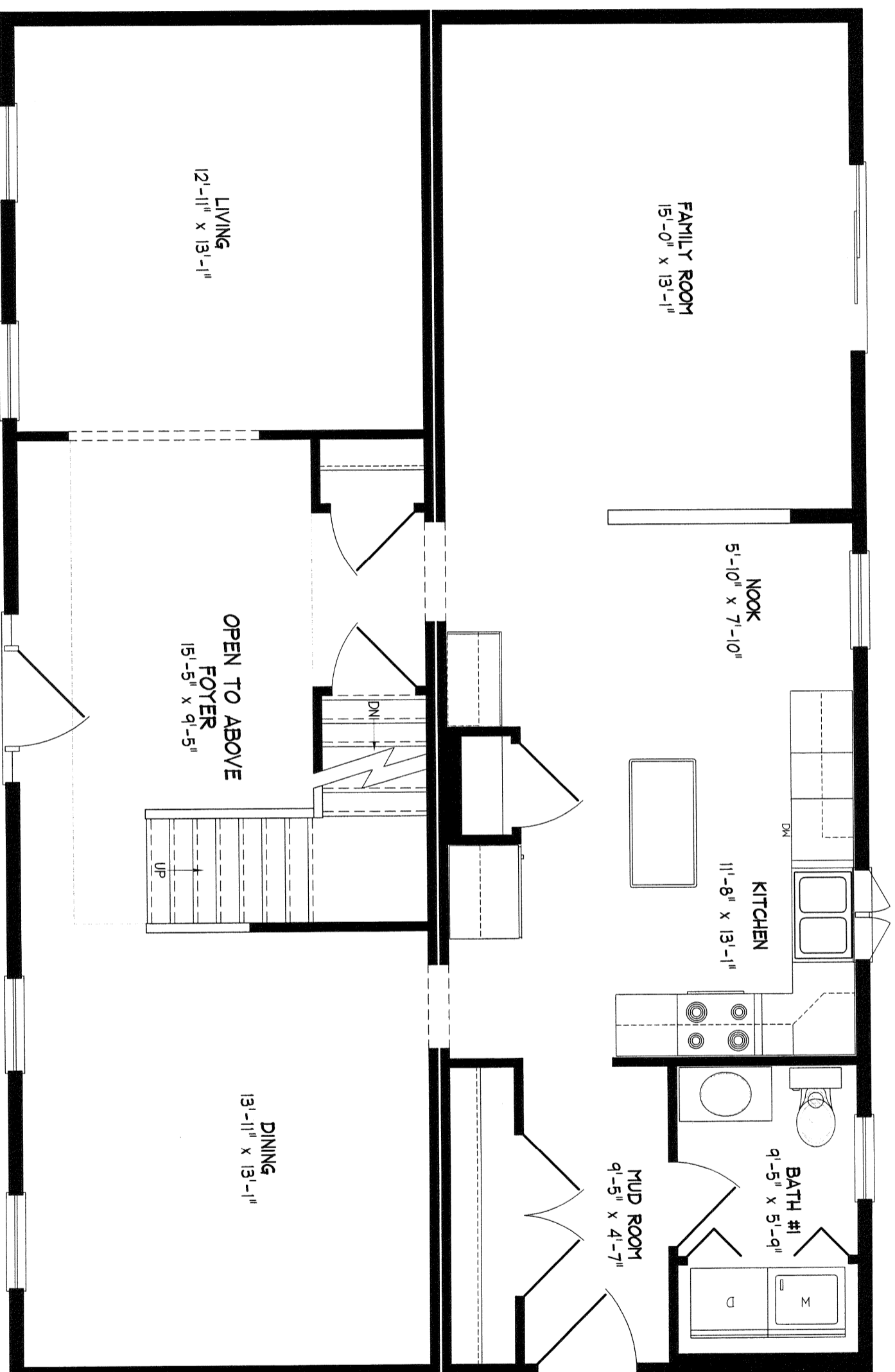


NOTES:
 -CHANGED MUDROOM 6'-0" BIFOLD TO 2/2-6 SWING
 -5068 BIFOLD IN BATH #1 TO BE L/L
 -ADDED A LINEN CLOSET BETWEEN M.I.C. AND
 BATH #2 AS WELL AS AN 'F' LIGHT



NOTE: ANY & ALL Material shipped loose for the site completion of the manufactured product is ULTIMATELY the SOLE RESPONSIBILITY OF THE BUILDER LISTED BELOW to install and finish.

Standard
Hyannis



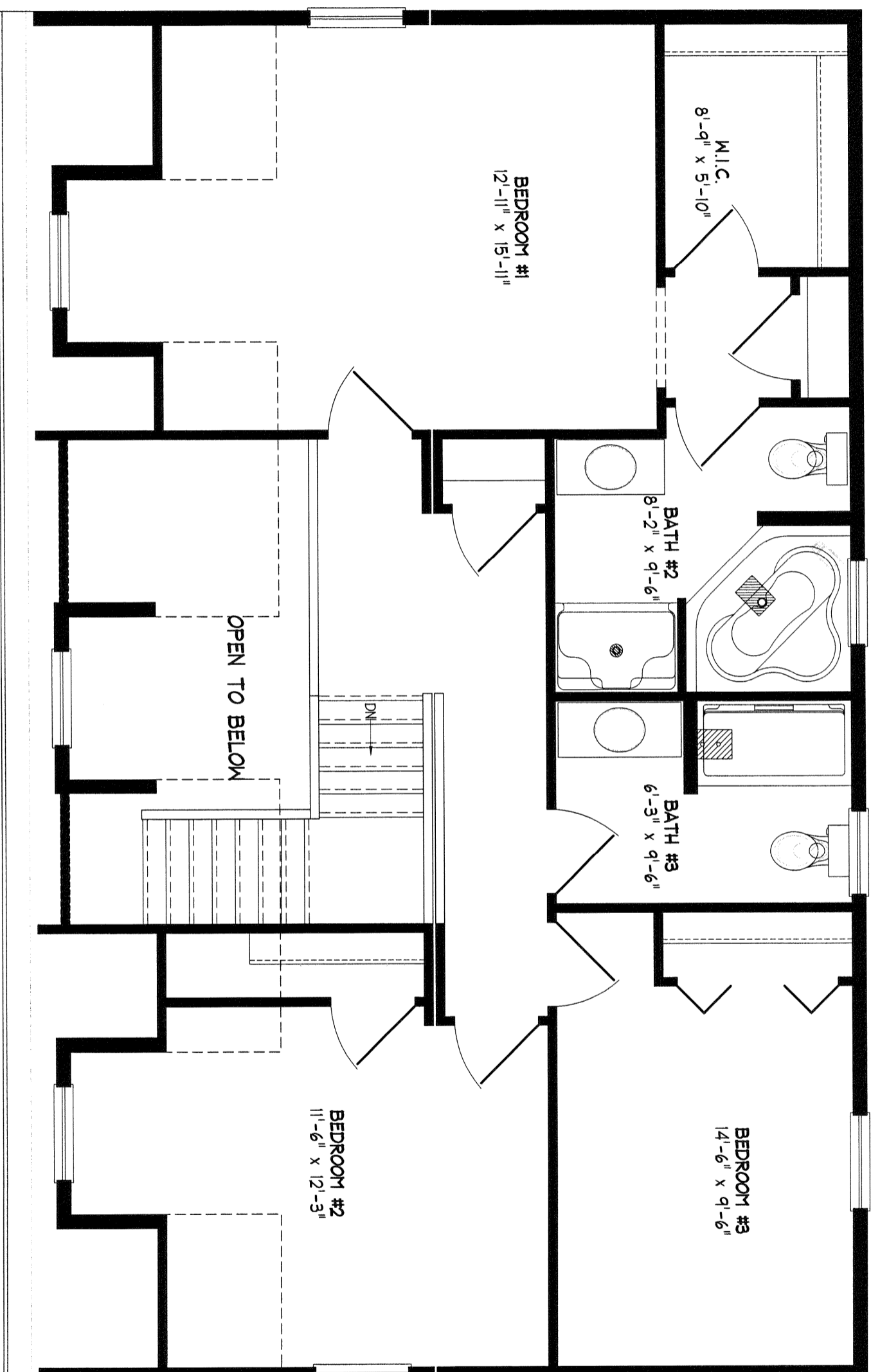
NEW ENGLAND HOMES INC.

270 OCEAN ROAD
 GREENLAND, NH 03940
 © COPYRIGHT 2000

DRAWN	PRG	DATE
REV.		03-02-06
SCALE	1/4" = 1'-0"	

NE.H.
Standard

NOTES:
 -CHANGED MUDROOM 6-0 BIFOLD TO 2/2-6 SWING
 -5068 BIFOLD IN BATH #1 TO BE L/L
 -ADDED A LINEN CLOSET BETWEEN M.I.C. AND
 BATH #2 AS WELL AS AN 1" LIGHT



NOTE: ANY & ALL Material shipped loose for the site completion of the manufactured product is ULTIMATELY the SOLE RESPONSIBILITY OF THE BUILDER LISTED BELOW to install and finish.

Standard
Hyannis



NEW ENGLAND HOMES INC.
 270 OCEAN ROAD
 GREENLAND, NH 03840
 © COPYRIGHT 2000

DRAWN	PRG	DATE
REV		03-02-06
SCALE	1/4" = 1'-0"	

NEH.
Standard