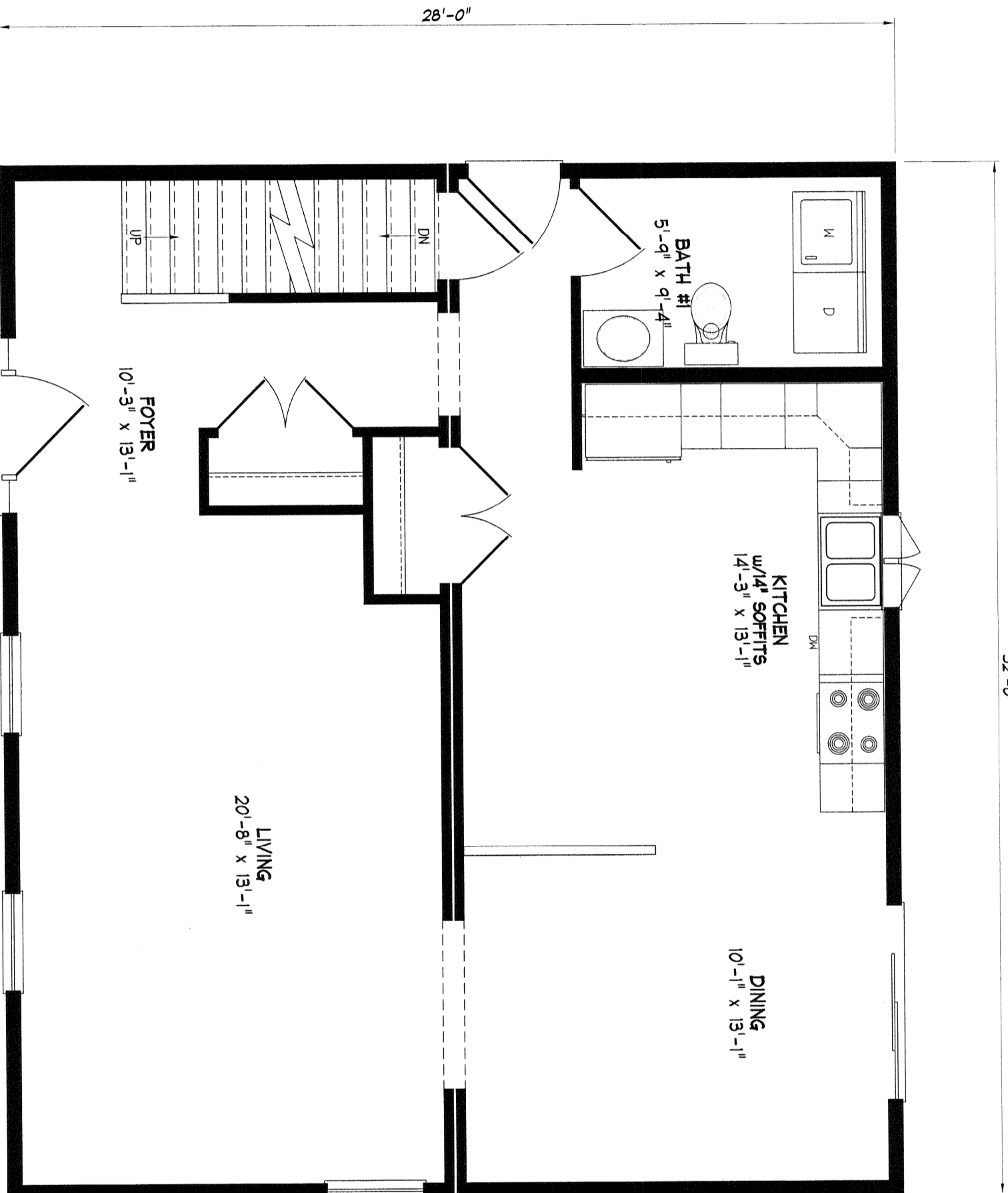


32'-0"



- NOTES:
- CHANGED CLOSET WITH 4-0 BIFOLD TO A CLOSET ON EACH SIDE OF BATH #2 DOOR w/2-0 SWING DOOR(S)
  - CHANGED SECOND FLOOR HALL CLOSET DOOR FROM 2-0 TO 1-6
  - BATH #3 WINDOW CHANGED FROM 244DH 2830 TO 244DH 2430

NOTE: ANY & ALL Material shipped loose for the site completion of the manufactured product is ULTIMATELY the SOLE RESPONSIBILITY OF THE BUILDER LISTED BELOW to install and finish.

**Standard  
Cape Cottage**



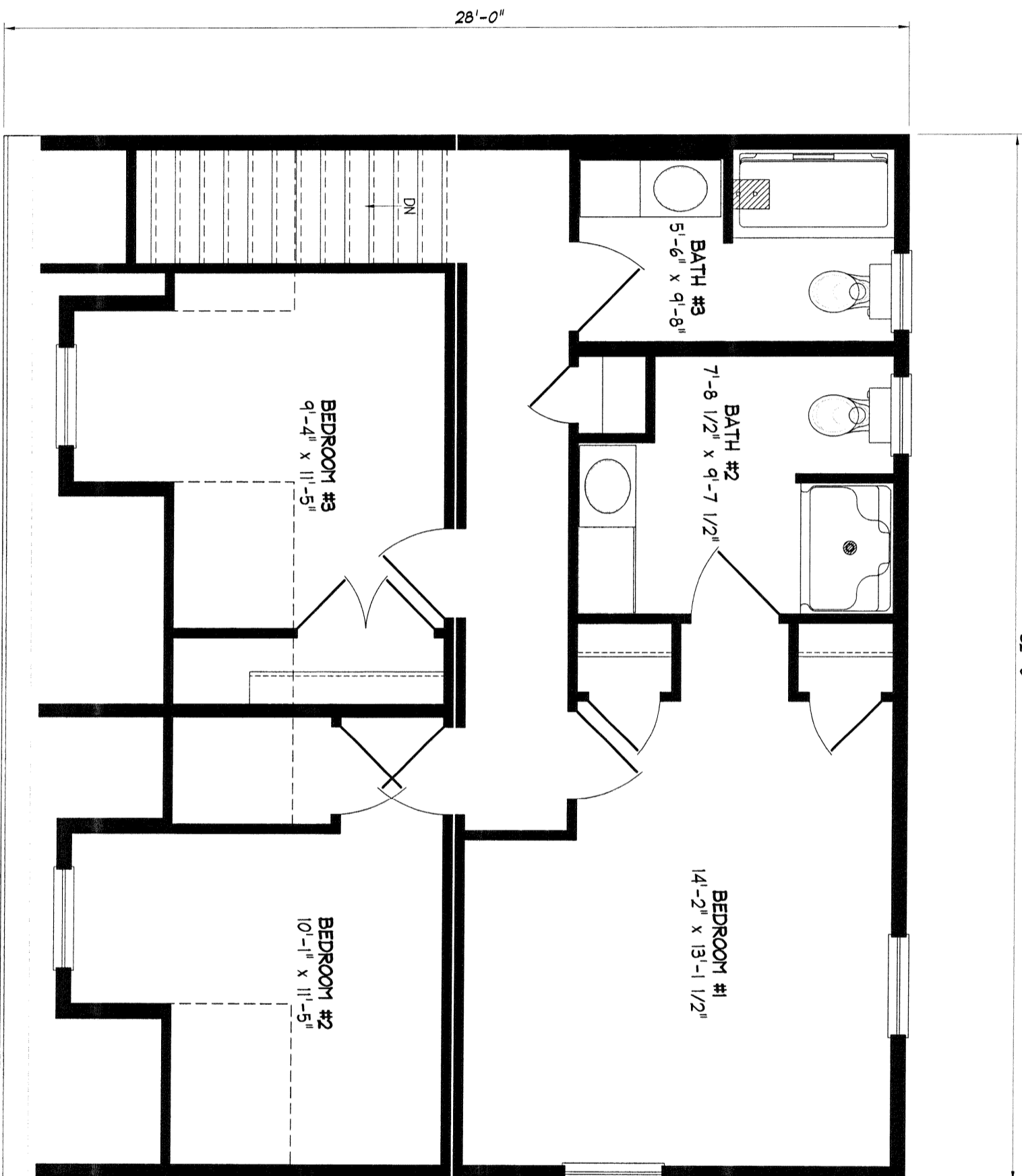
**NEW ENGLAND HOMES INC.**

270 OCEAN ROAD  
GREENLAND, NH 03940  
© COPYRIGHT 2000

DRAWN	PRG	DATE	02-15-06
REV.		DATE	
SCALE	1/4" = 1'-0"		

**NE.H.  
Standard**

32'-0"



- NOTES:
- CHANGED CLOSET WITH 4-0 BIFOLD TO A CLOSET ON EACH SIDE OF BATH #2 DOOR w/2-0 SWING DOOR(5)
  - CHANGED SECOND FLOOR HALL CLOSET DOOR FROM 2-0 TO 1-6
  - BATH #3 WINDOW CHANGED FROM 244DH 2830 TO 244DH 2430

NOTE: ANY & ALL Material shipped loose for the site completion of the manufactured product is ULTIMATELY the SOLE RESPONSIBILITY OF THE BUILDER LISTED BELOW to install and finish.

**Standard**  
**Cape Cottage**



**NEW ENGLAND HOMES INC.**

270 OCEAN ROAD  
GREENLAND, NH 03840  
© COPYRIGHT 2000

DRAWN	PRG	DATE	02-15-06
REV.		DATE	
SCALE	1/4" = 1'-0"		

**NEH.**  
**Standard**