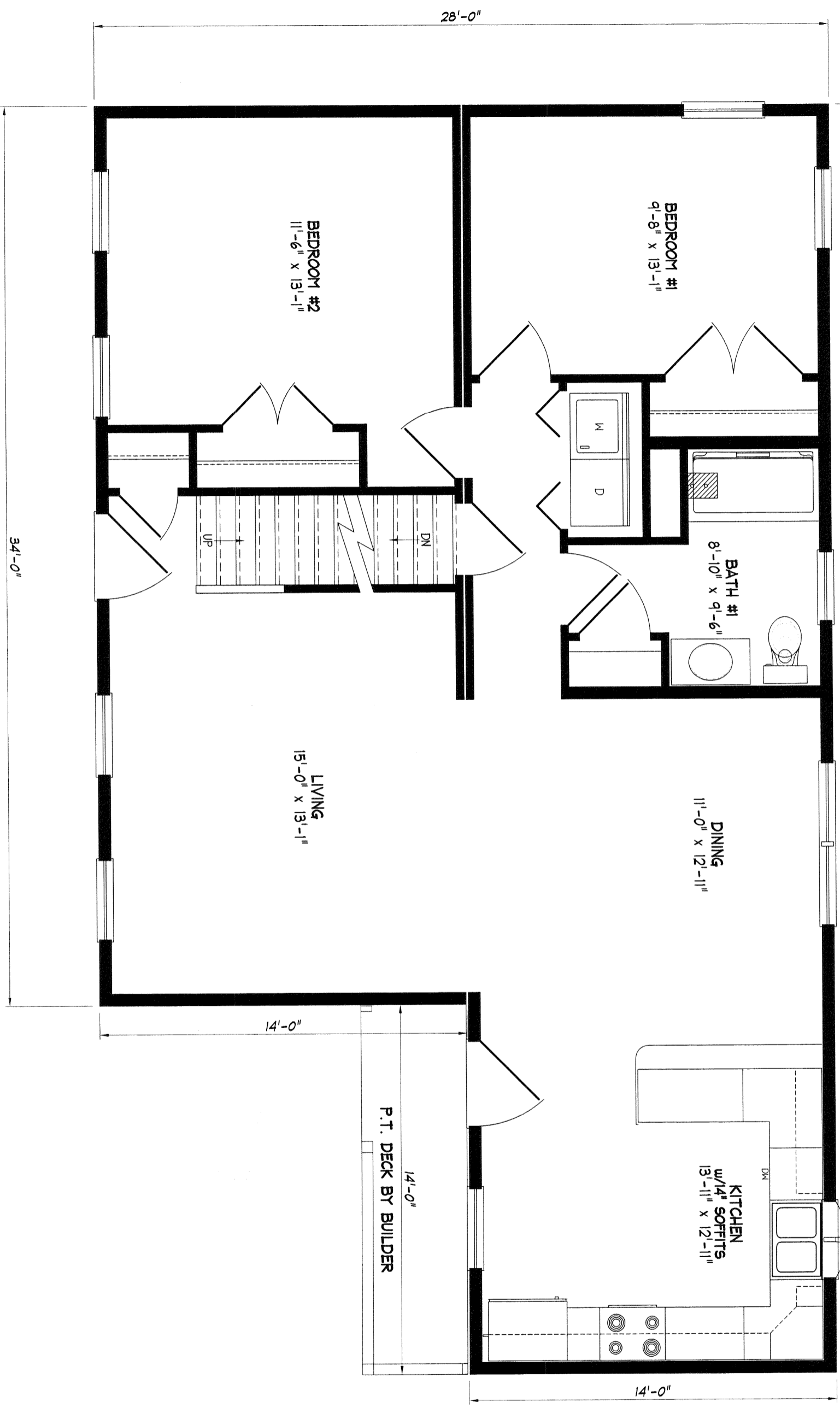


48'-0"



NOTES:
 -BD4-18 AND W1830 NEXT TO FRIDGE WERE CHANGED TO BD4-15 AND W1530 FOR FIT (2x6 FRONT AND REAR EXTERIOR WALLS)
 -ADDED 244DH 3049 IN BEDROOM #4 TO MEET LIGHT/VENT REQUIREMENTS

NOTE: ANY & ALL Material shipped loose for the site completion of the manufactured product is ULTIMATELY the SOLE RESPONSIBILITY OF THE BUILDER LISTED BELOW to install and finish.

Standard
Camden



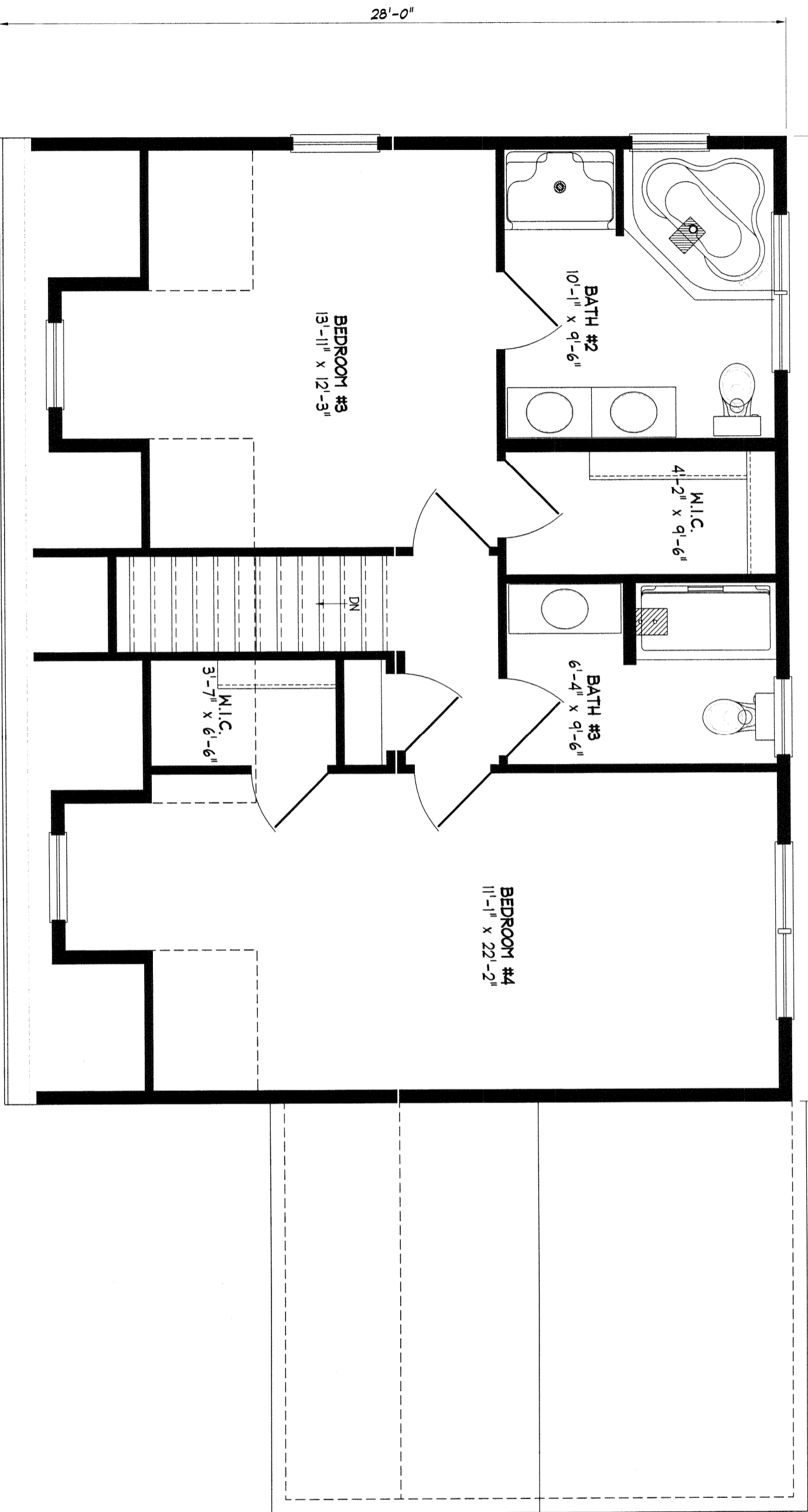
NEW ENGLAND HOMES INC.

270 OCEAN ROAD
 GREENLAND, NH 03840
 © COPYRIGHT 2000

DRAWN	PRG	DATE	02-15-06
REV.		DATE	
SCALE	1/4" = 1'-0"		

NEH.
Standard

34'-0"



NOTES:
 -BD4-18 AND W1830 NEXT TO FRIDGE WERE CHANGED TO BD4-15 AND W1530 FOR FIT (2x6 FRONT AND REAR EXTERIOR WALLS)
 -ADDED 244DH 3049 IN BEDROOM #4 TO MEET LIGHT/VENT REQUIREMENTS

NOTE: ANY & ALL Material shipped loose for the site completion of the manufactured product is ULTIMATELY the SOLE RESPONSIBILITY OF THE BUILDER LISTED BELOW to install and finish.

Standard
Camden

New England
Homes

NEW ENGLAND HOMES INC.
 270 OCEAN ROAD
 GREENLAND, N.H. 03340
 © COPYRIGHT 2000

DRAWN	PRG	DATE	02-15-06
REV.		DATE	
SCALE	1/4" = 1'-0"		

N.E.H.
Standard