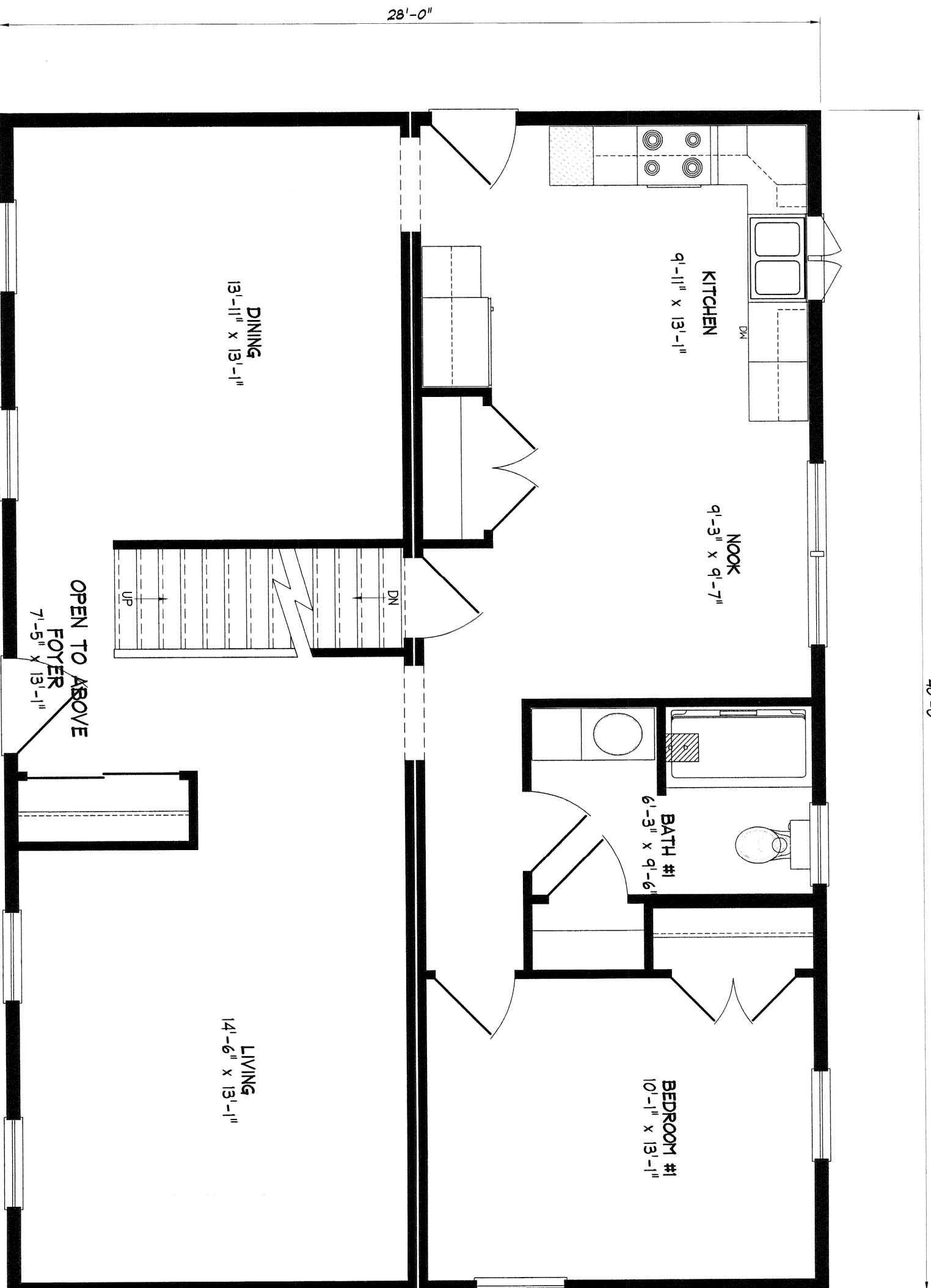


40'-0"



NOTES:  
 -CHANGED 4-0 BIFOLD IN KITCHEN PANTRY TO 2/2-0 SWING  
 -VBD30 IN BATH #1 TO BE VBD30L SO DOOR SWINGS AGAINST WALL

28'-0"

KITCHEN  
9'-11" x 13'-1"

NOOK  
9'-3" x 9'-7"

BATH #1  
6'-3" x 9'-6"

BEDROOM #1  
10'-1" x 13'-1"

DINING  
13'-11" x 13'-1"

LIVING  
14'-6" x 13'-1"

OPEN TO ABOVE  
FOYER  
7'-5" x 13'-1"

NOTE: ANY & ALL Material shipped loose for the site completion of the manufactured product is ULTIMATELY the SOLE RESPONSIBILITY OF THE BUILDER LISTED BELOW to install and finish.

Standard  
Atlantic



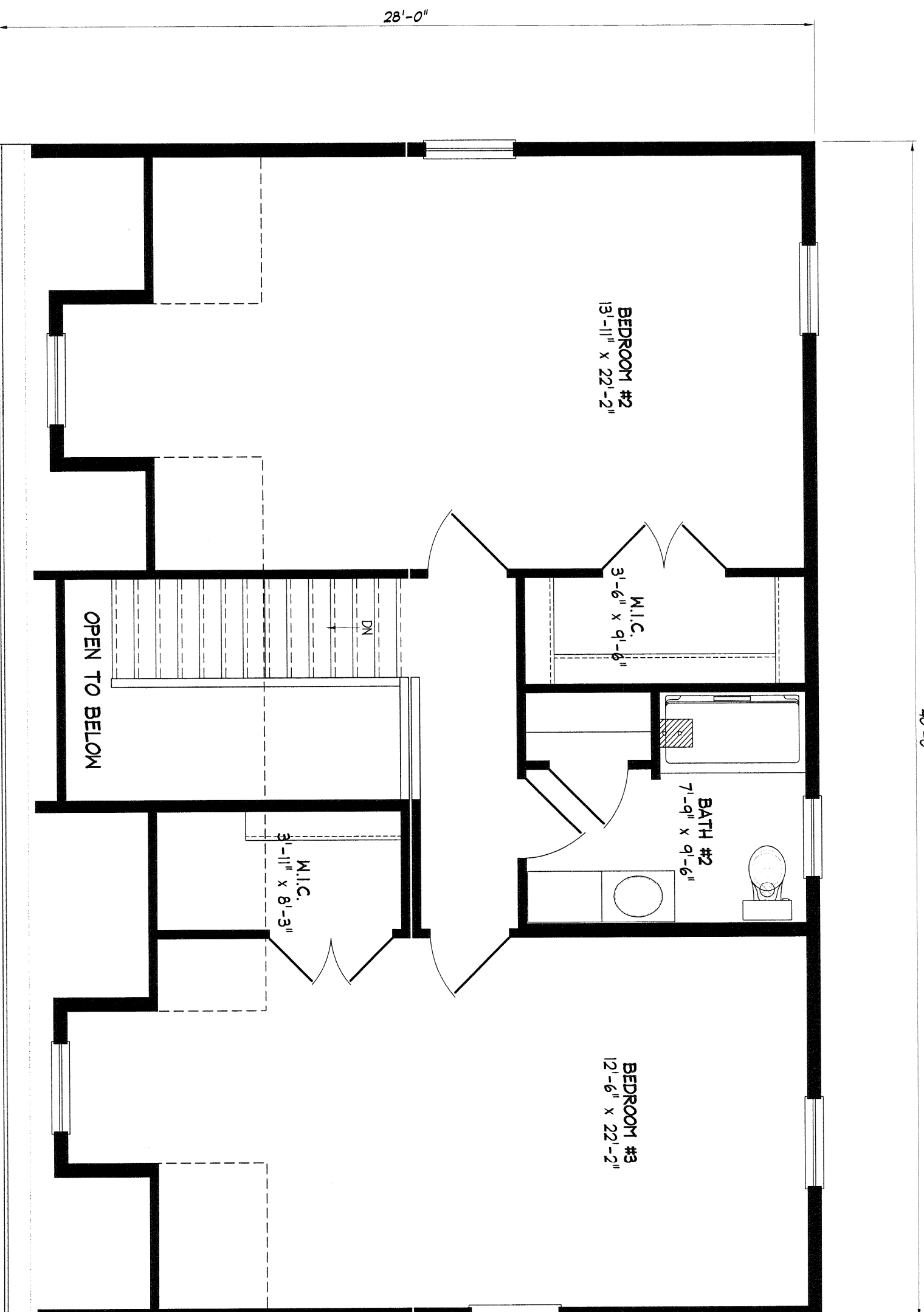
NEW ENGLAND HOMES INC.

270 OCEAN ROAD  
GREENLAND, NH 03840  
© COPYRIGHT 2000

DRAWN	PRG	DATE	02-08-06
REV.		DATE	
SCALE	1/4" = 1'-0"		

N.E.H.  
Standard

40'-0"



NOTES:  
 -CHANGED 4-0 BIFOLD IN KITCHEN PANTRY TO  
 2/2-0 SWING  
 -VBD30 IN BATH #1 TO BE VBD30L SO DOOR  
 SWINGS AGAINST WALL

NOTE: ANY & ALL Material shipped loose for the site completion of the manufactured product is ULTIMATELY the SOLE RESPONSIBILITY OF THE BUILDER LISTED BELOW to install and finish.

Standard  
 Atlantic



**NEW ENGLAND HOMES INC.**  
 270 OCEAN ROAD  
 GREENLAND, NH 03940  
 © COPYRIGHT 2000

SCALE	1/4" = 1'-0"
REV	
DRAWN	PRG
DATE	02-08-06

NE.H.  
 Standard