

-BED 1 CLOSET DOOR FROM 5-0 BF TO 4-0 BF
 -ADD 1 3049 TO FUTURE BED 3
 -ADD 1 3049 TO FUTURE BED 4

NOTE: ANY & ALL Material shipped loose for the site completion of the manufactured product is ULTIMATELY the SOLE RESPONSIBILITY OF THE BUILDER LISTED BELOW to install and finish.

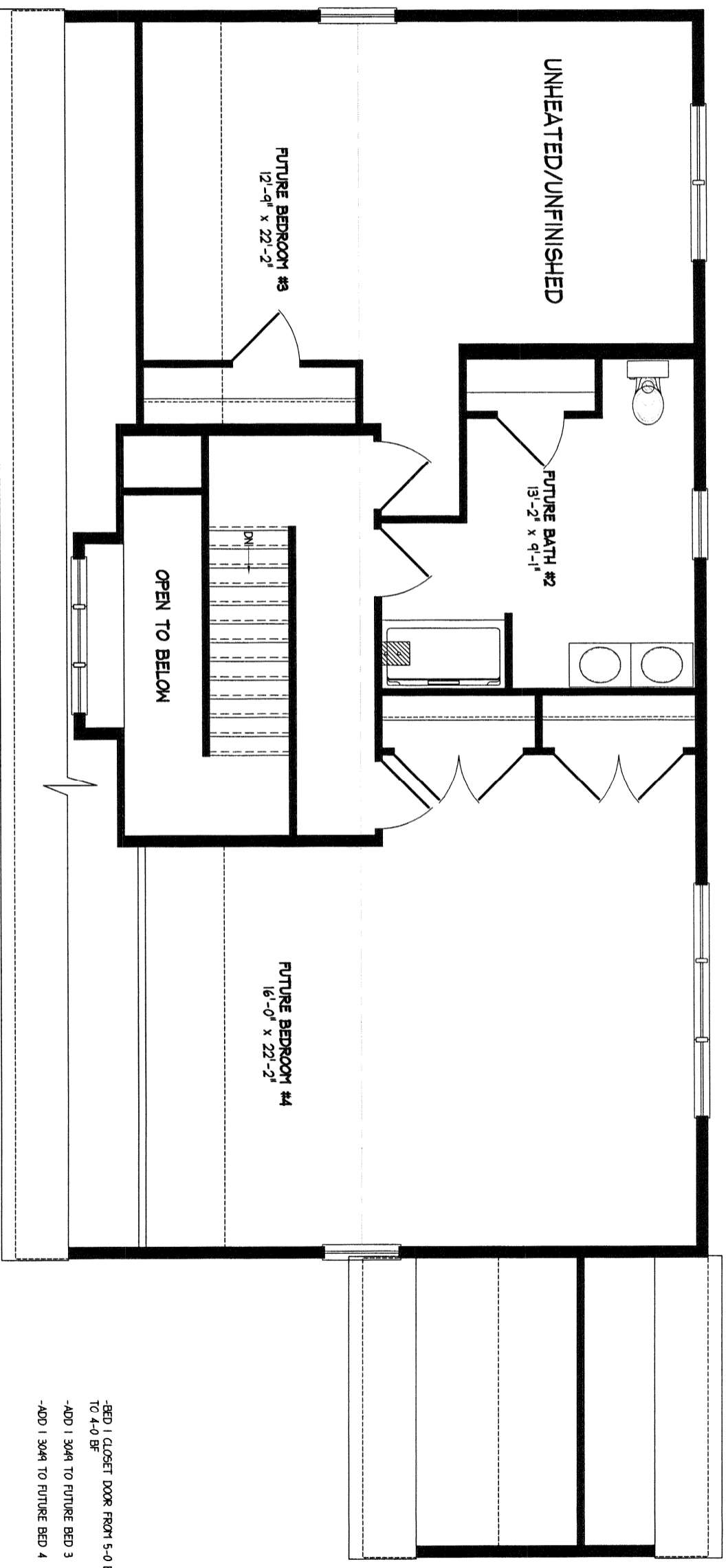
**Victoria II
 CAPE**



NEW ENGLAND HOMES INC.
 270 OCEAN ROAD
 GREENLAND, NH 03840
 © COPYRIGHT 2000

DRAWN	DATE
REV.	DATE
SCALE	3/16" = 1'-0"

**NEH
 NEH**



-BED 1 CLOSET DOOR FROM 5-0-BF TO 4-0-BF
 -ADD 1 304R TO FUTURE BED 3
 -ADD 1 304R TO FUTURE BED 4

NOTE: ANY & ALL Material shipped loose for the site completion of the manufactured product is ULTIMATELY the SOLE RESPONSIBILITY OF THE BUILDER LISTED BELOW to install and finish.

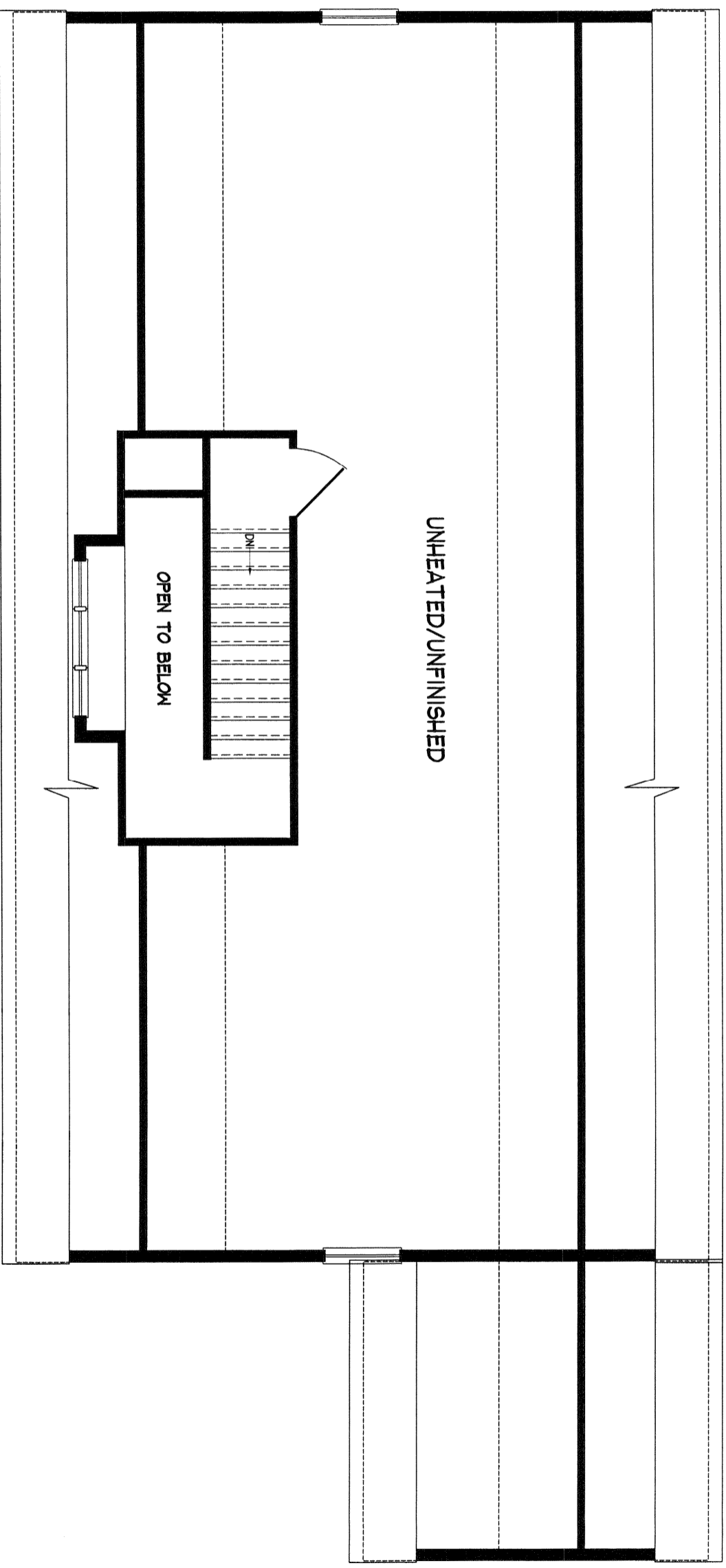
Victoria II
 CAPE



NEW ENGLAND HOMES INC.
 270 OCEAN ROAD
 GREENLAND, NH 03940
 © COPYRIGHT 2000

DRAWN	DATE
REV.	DATE
SCALE	3/16"=1'-0"

NEH
 NEH



NOTE: ANY & ALL Material shipped loose for the site completion of the manufactured product is ULTIMATELY the SOLE RESPONSIBILITY OF THE BUILDER LISTED BELOW to install and finish.

**Victoria II
CAPE**



NEW ENGLAND HOMES INC.
270 OCEAN ROAD
GREENLAND, NH 03840
© COPYRIGHT 2000

DRAWN	DATE
REV.	DATE
SCALE	3/16" = 1'-0"

**NEH
NEH**